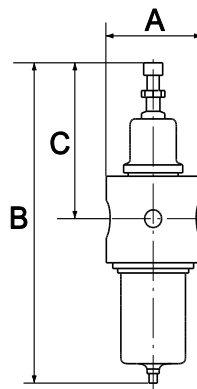
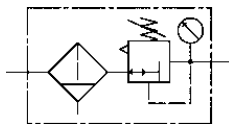


Stainless steel filter regulators with self-relieving (not for liquid media) for use in the chemical industry, mining, plant construction and special machinery industries, pneumatics, etc.  
Pressure setting by hexagon head screw.

Max. input pressure	30 bar
Max. medium temperature	80 °C
Max. ambient temperature	80 °C
Housing	Stainless steel casting 1.4401 (AISI 316)
Sealant	NBR
Diaphragms	NBR/PTFE
Drain valve	Manual drain valve
Filter rating	25 µm
Flow rate measurement	At $P_1 = 10$ bar, $P_2 = 6$ bar and pressure drop $\Delta p \leq 1$ bar

Reversible, stainless steel filter regulator with self-relieving design, manual drain valve and stainless steel pressure gauge

Art. No.	Type No.	Thread	Control range bar	Flow rate l/min	A mm	B mm	C mm
133539	580FRM1-14-4	G 1/4	0.4 - 4	2495	64.0	271.0	117.0
133540	580FRM1-14-17	G 1/4	1.7 - 17.5	2495	64.0	271.0	117.0
133541	580FRM1-38-4	G 3/8	0.4 - 4	3200	64.0	271.0	117.0
133542	580FRM1-38-17	G 3/8	1.7 - 17.5	3200	64.0	271.0	117.0
133543	580FRM3-12-4	G 1/2	0.4 - 4	5440	82.0	275.0	123.0
133544	580FRM3-12-17	G 1/2	1.7 - 17.5	5440	82.0	275.0	123.0
133545	580FRM3-34-4	G 3/4	0.4 - 4	9630	82.0	275.0	123.0
133546	580FRM3-34-17	G 3/4	1.7 - 17.5	9630	82.0	275.0	123.0
133547	580FRM4-1-4	G 1	0.4 - 4	10000	120.0	346.0	136.0
133548	580FRM4-1-17	G 1	1.7 - 17.5	10000	120.0	346.0	136.0



580FRM3-12-4

**Accessories / spare parts for stainless steel filter regulator G 1/4 and G 3/8 (Size 1)**

Art. No.	Type No.	Description
102510	4083	Pressure gauge Ø 63 mm, G 1/4 ET, 0 - 6 bar
102511	4086	Pressure gauge Ø 63 mm, G 1/4 ET, 0 - 25 bar
137114	580RM1-VS	Set of wearing parts
137119	580FM-EF	Replacement filter element
137121	580FM1-ED	Replacement seal
137113	580RM-BW	Mounting bracket
137117	580FM-BMA	Stainless steel container

**Accessories / spare parts for stainless steel filter regulator G 1/2 and G 3/4 (Size 3)**

Art. No..	Type No..	Description
102510	4083	Pressure gauge Ø 63 mm, G 1/4 ET, 0 - 6 bar
102511	4086	Pressure gauge Ø 63 mm, G 1/4 ET, 0 - 25 bar
137115	580RM3-VS	Set of wearing parts
137119	580FM-EF	Replacement filter element
137122	580FM3-ED	Replacement seal
137113	580RM-BW	Mounting bracket
137117	580FM-BMA	Stainless steel container

**Accessories / spare parts for stainless steel filter regulator G 1 (Size 4)**

Art. No.	Type No..	Description
102510	4083	Pressure gauge Ø 63 mm, G 1/4 ET, 0 - 6 bar
102511	4086	Pressure gauge Ø 63 mm, G 1/4 ET, 0 - 25 bar
137116	580RM4-VS	Set of wearing parts
137120	580FM4-EF	Replacement filter element
137123	580FM4-ED	Replacement seal
137113	580RM-BW	Mounting bracket
137118	580FM4-BMA	Stainless steel container



4086



580RM3-VS



580FM-EF



580FM3-ED



580RM-BW



580FM-BMA